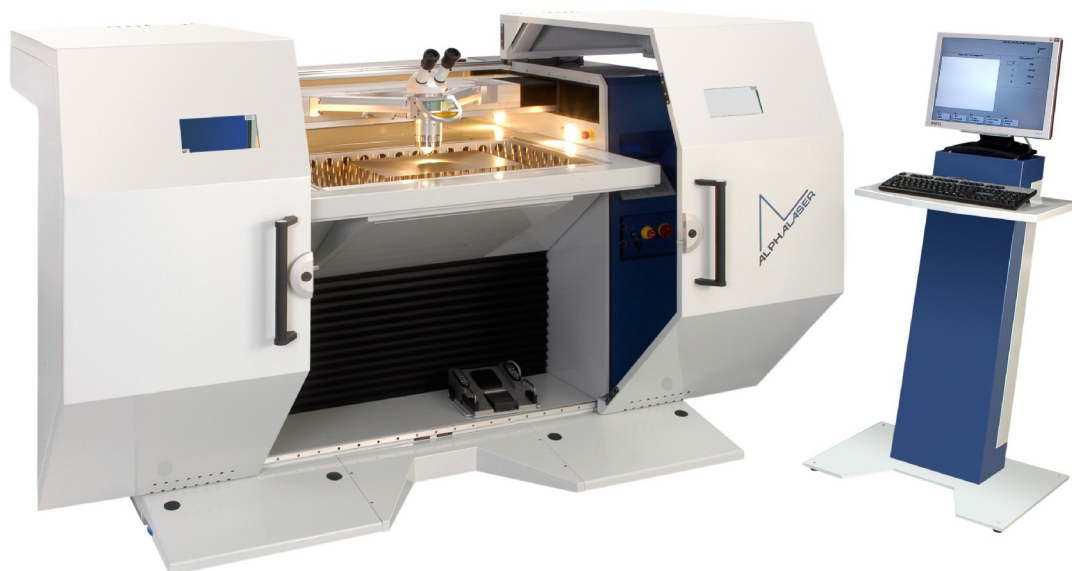


NEW



AC 200

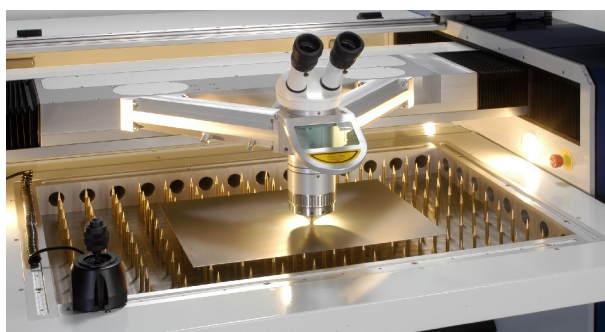
A new dimension in laser cutting



The Alpha Laser AC 200 is a **flexible laser cutting and welding system** for fast 2D and 3D handling of metallic materials such as steel sheets, pipes and 3D forms.

The new AC 200 has a working chamber of 1100 x 1500 mm and a working area of 500 x 450 x 350 mm (X, Y, Z) but only requires a floor space of 3055 x 1700 x 1400 mm (W x D x H) due to its compact design.

Both steel sheets off the coil and large 3D forms can be worked on.



A solid steel-welding construction together with the portal assembly forms the basis of the x and y axes. The z-axis is provided by the working table which houses the work-pieces and devices. The axle drives are digitally coupled servo motors which are maintenance-free. Accurate measuring systems in the main axes guarantee minute positioning accuracy.

Laser sources of 50 W – 200 W are available. These, together with the laser cooling are integrated in the machine housing.

The AC 200 is operated by using an intuitive control interface with visual display.

Depending on the application, the AC 200 can be equipped with several options (tilting- and swivelling axis, different optics).

AC 200

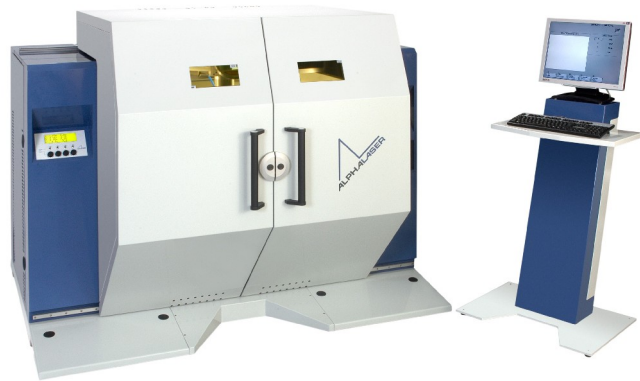


Fields of application

One machine for everything: both **laser cutting** and **laser welding** of prototypes and series is possible using the AC 200.

In addition to design and development laboratories and component suppliers, the flexible AC 200 is extremely interesting for service providers in the areas of

- Precision engineering
- Electronics production
- medical technology
- vehicle and machine construction
- jewellery production



Technical Data

Dimensions machine (W x D x H):	1725 x 1396 x 1400 mm
Required floor space (W x D x H):	3055 x 1700 x 1400 mm
System weight:	1600 kg
max. part weight:	350 kg
Electrical requirement:	3 x 400 V, 50/60 Hz, 3 x 16 A, 12 kW
Cooling:	Air-cooled, optional water cooling
Suction:	integrated

Laser

Laser crystal:	Nd:YAG
Wavelength:	1064 nm
Average power:	200 W
Protection class:	laser class 1

Positioning system

Machine axes:	3 or 4
Working range (X, Y, Z):	500 x 450 x 350 mm
Positioning speed:	100 mm / sec (6 m / min)

Accuracy¹

Smallest programmable increment:	0,001 mm
Positioning accuracy Pa:	0,05 mm max.
Repeatability:	0,03 mm max.

Modes of operation

Manual operation via Joystick
Semiautomatic
Teach mode via Joystick
Transfer of CAD DXF Files (option)

¹Acc. to VDI/DGQ 3441 – Measured over a length of 1m. The accuracy attainable in the part depends, amongst other things, on the type of workpiece, its pre-treatment, material thickness, sheet size and its position in the working area.